



# Single-family Home

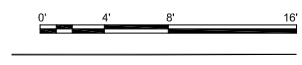
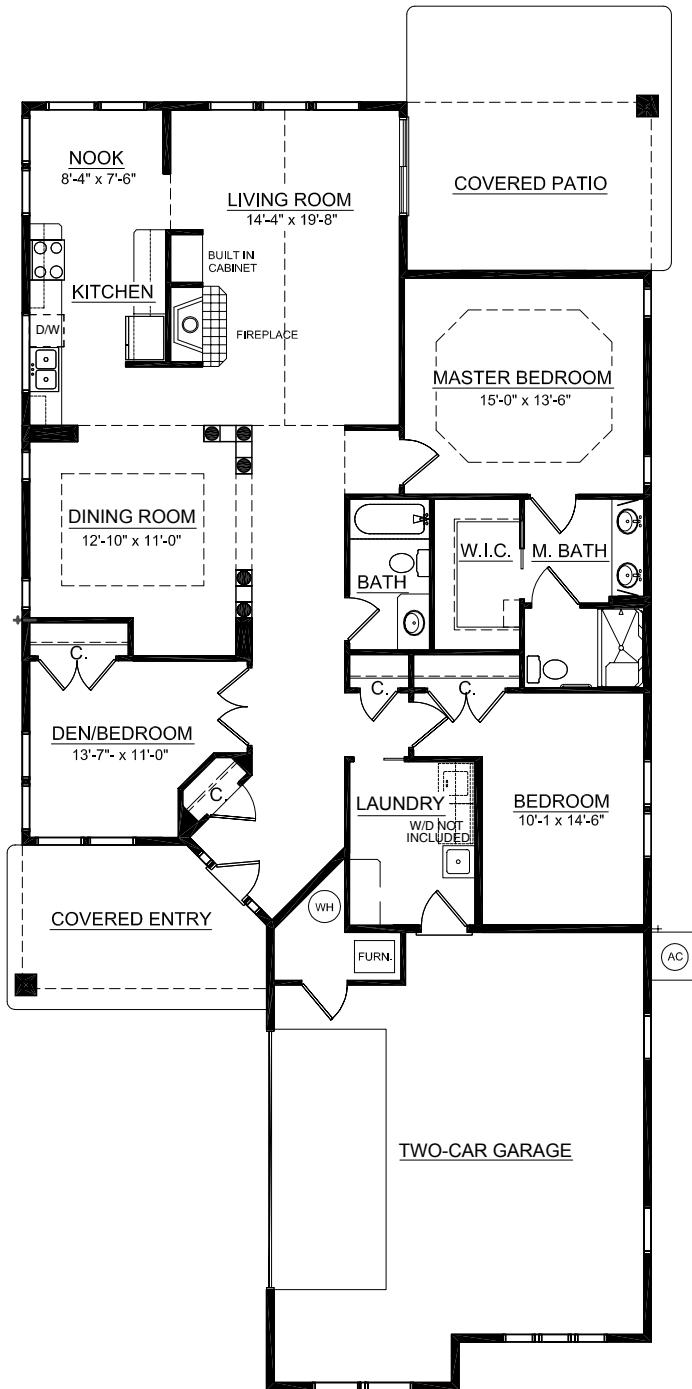
## The Columbia

Main 1,834 sq. ft.

Garage 619 sq. ft.

3 Bedroom | 2 Bath

### TOUCHMARK AT GRAPETREE



126483 TGT005 Rev. 01/12

2620 S Grapetree Drive • Spokane, WA 99203 • 509-321-8321 • Touchmark.com

For illustration purposes only. Square footage, actual room sizes, and features may vary. See construction documents.

© 2012 Touchmark Living Centers, Inc., all rights reserved